



WHITMAN PARTNERS

2024 INTERIM INDUSTRY EXPERIENCE

CONTENTS

Why Choose Us	2
Our Process	3
References	4
Testimonials	5
Interims Experience List	6
Questions to Ask Your Interim Candidate	7
Meet Our Team	8

WHITMAN PARTNERS

whitmanpartners.com | interim@whitmanpartners.com | 503-445-1044

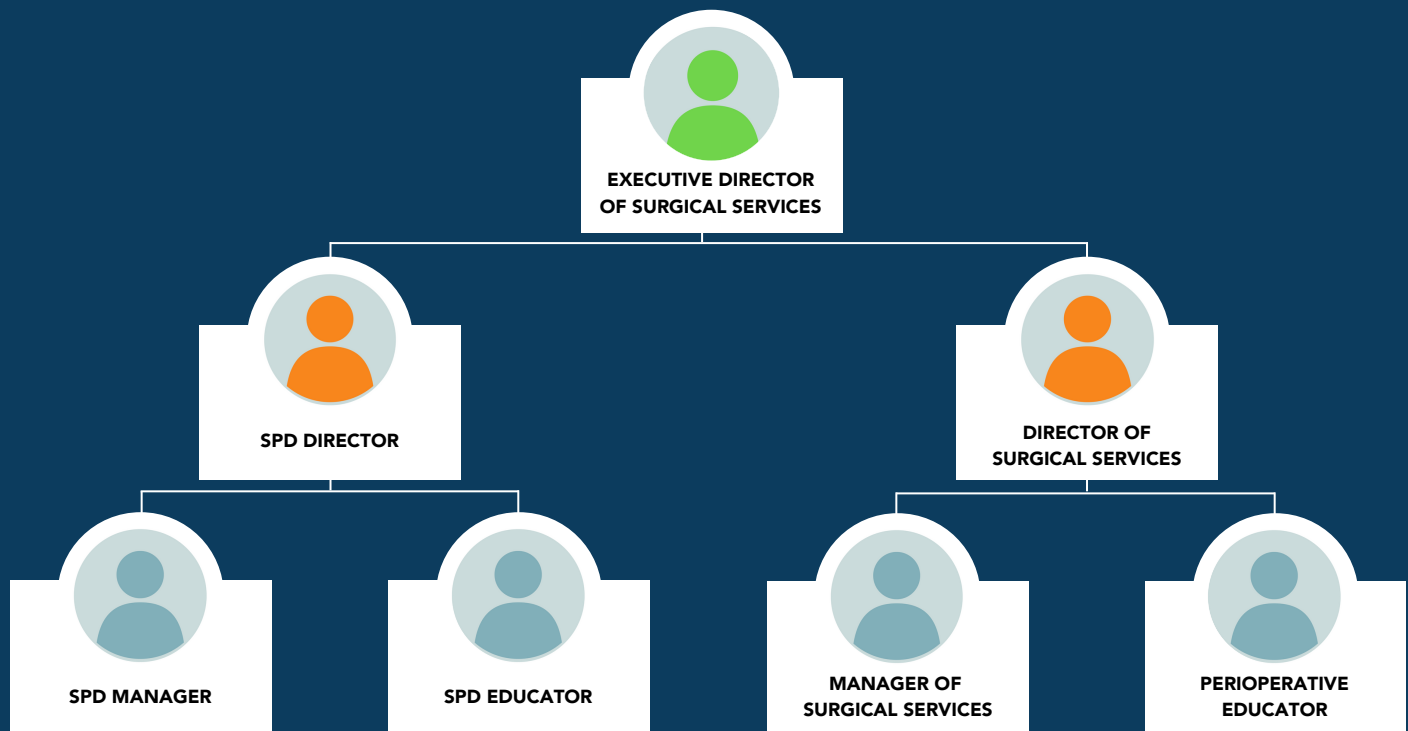


WHITMAN PARTNERS

WHY CHOOSE US?

Specialized Expertise: With 18+ years in perioperative leadership recruitment across Academic Medical Centers, Community Hospitals, Ambulatory Surgery Centers, and Critical Access Hospitals, Whitman Partners deeply understands the specific skills and qualifications needed to excel, ensuring the right talent for your team.

INTERIM POSITIONS WE FILL:



Benefits of Hiring an Interim Perioperative Leader:

- **Immediate Expertise:** Interim leaders bring extensive experience and can quickly adapt to your hospital's environment, providing stability and continuity in perioperative services.
- **Flexibility:** Interim placements offer flexibility in managing short-term needs without long-term commitments.
- **Focus on Outcomes:** Our candidates are result-driven, ensuring that your perioperative department maintains high standards of patient care and operational efficiency during transitions.



WHITMAN PARTNERS

OUR PROCESS

Whitman Partners supports Perioperative Departments and Directors of Surgical Services by providing qualified interim talent with the goal of building an effective, efficient, and reliable perioperative team.

RECEIVE 5 VETTED CANDIDATES WITHIN 24 HOURS

5

FULLY VETTED CANDIDATES



We provide a slate or resumes with a brief summary of each candidate.

2

VIDEO INTERVIEWS



Choose your top two candidates to interview over video.

1

PLACEMENT



From the time of placement, your candidate will start 10 days after placement is confirmed.

OUR SERVICE

Our dedicated team will schedule and manage all logistics to ensure your Interim Leader begins their assignment ASAP. We have a dedicated HR specialist and Concierge to guarantee that your interim begins their assignment without delays.



**DRUG
SCREENS**



**BACKGROUND
CHECKS**



**TRAVEL
COORDINATION**

Whitman Partners has a diverse roster of qualified interim candidates for every geography, facility size and scope. Call us for a preliminary Needs Assessment and 24-hr slate of candidates.



WHITMAN PARTNERS

CLIENT REFERENCES

We hope you can find the time to connect with our clients. Do not hesitate to reach out to the following VP of Surgical Services to get their insight on what it's like working with Whitman Partners:

Ask Our Past Clients:



KATRINA L. CONINE

RN, MSN, CNOR

VP Surgical & Perioperative Services

MetroHealth

216-957-6148 ext-76148

kconine@metrohealth.org



STACEY M. COSCO

NP, MM, RN, NEA-BC

VP Perioperative & Surgical Services

Dartmouth-Hitchcock Medical Center

Tel (603) 650-7491

Cell (603) 359-2621

stacey.m.cosco@hitchcock.org



LYNN WYLLIE

MSN, BSN, RN, CNOR, CSSM

VP Peri-Operative

Services
Hospital

903-606-4002

lynn.wyllie@christushealth.org

For a full list of references, please email us at interim@whitmanpartners.com.



WHITMAN PARTNERS

TESTIMONIALS ABOUT OUR INTERIMS FROM OUR CLIENTS



"Amber gained the respect of the OR staff, so her implementation of new processes were accepted. She also received her CNOR while with us which was excellent role model."

– Manager, Nursing Professional Development Practitioner, talking about Amber Megens, Interim Operating Room Educator.



"Thomas arrived with detailed knowledge of this industry. He never presented feedback without having the data to support it, and was able to decrease turnover time."

– Clinical Operations Manager at Emory University Orthopaedic & Spine Hospital, talking about Thomas Fields, Interim Director of Surgical Services.



"Her deep understanding of industry trends, regulations, and best practices was evident in the strategic decisions she made and the insightful contributions she provided to discussions. Kristin's proficiency in staying abreast of industry changes and her ability to apply that knowledge to enhance our projects and initiatives significantly contributed to the success of our team."

– ACNO at El Camino Health, talking about Kristin Varnes, Interim Enterprise Perioperative Services Educator

For more testimonials, please email us at interim@whitmanpartners.com.



WHITMAN PARTNERS

2024 INTERIM EXPERIENCE LIST

ALASKA

Bartlett Regional Hospital
Juneau, AK
Interim SPD Manager

ARIZONA

Phoenix Children's Hospital
Phoenix, AZ
Interim Manager of Aerodigestive Surgery
and Rosenberg Surgery Center

ARKANSAS

Conway Regional Medical Center
Conway, AR
Interim Director of Surgical Services

CALIFORNIA

Torrance Memorial Medical
Center
Huntington Beach, CA
Interim OR Educator

UC San Diego East Campus
Medical Center
San Diego, CA
Interim Director of Perioperative &
Procedural Services

Watsonville Community Hospital
San Jose, CA
Interim Director of Surgical Services

Mercy Medical Center
Merced, CA
Interim Director of Surgical Services

San Leandro Hospital
Alameda, CA
Interim Manager of Perioperative Services

El Camino Health
Mountain View, CA
Interim Perioperative Educator
Interim SPD Supervisor
Interim SPD Educator
Interim Assistant Director of Sterile
Processing

COLORADO

AdventHealth Porter
Denver, CO
Interim OR Manager
Interim OR Educator

GEORGIA

Emory University Orthopedics &
Spine Hospital
Atlanta, GA
Interim Director of Surgical Services

Children's Healthcare of Atlanta at
Egleston
Atlanta, GA
Interim OR Manager

Phoebe Putney Memorial Hospital
Albany, GA
Interim OR Educator
Interim Central Sterile Processing Manager

ILLINOIS

Lurie Children's Hospital of
Chicago
Chicago, IL
Interim OR Educator

KANSAS

LMH Health
Lawrence, KA
Interim OR Manager

LOUISIANA

Allen Parish Hospital
Kinder, LA
Interim Director of Surgical Services

Christus Highland Medical Center
Shreveport, LA
Interim Director of Surgical Services

Bayou Bend Hospital
Franklin, LA
Interim Director of Surgical Services

MAINE

Northern Maine Medical Center
Fort Kent, ME
Interim Director of Surgical Services

MARYLAND

UM Medical Center
Baltimore, MD
Interim Sterile Processing Director

Doctors Community Medical
Center
Lanham, MD
Interim OR Educator
Interim OR Manager

UM Capital Region Medical
Center
Largo, MD
Interim OR Educator

UM Medical Center
Baltimore, MD
Interim SPD Director

MASSACHUSETTS

St. Elizabeth's Medical Center
Boston, MA
Interim OR Manager
Interim OR Educator

MISSOURI

SSM Health Cardinal Glennon
Children's Hospital
St. Louis, MO
Interim OR Manager

NEBRASKA

Bryan Medical Center
Lincoln, NE
Interim Director of Surgical Services

Faith Regional Medical Center
Norfolk, NE
Interim Director of Surgical Services

NEW HAMPSHIRE

Elliot Hospital
Manchester, NH
Interim OR Educator

NORTH CAROLINA

Capital City Surgery Center
Raleigh, NC
Interim OR Educator

FirstHealth Moore Regional Hospital
Pinehurst, NC
Interim Executive Director of Surgical Services

OHIO

Crystal Clinic Orthopaedic Center
Hospital
Fairlawn, OH
Interim SPD Manager
Interim Director of Surgical Services

OREGON

Providence Newberg Medical Center
Newberg, OR
Interim Surgical Services Manager

Good Shepherd Medical Center
Hermiston, OR
Interim Director of Surgical Services

St. Charles Medical Center Redmond
Redmond, OR
Interim OR & Same Day Unit Manager

Providence Newberg Medical Center
Newberg, OR
Interim Surgical Services Manager

PENNSYLVANIA

Grand View Hospital
Sellersville, PA
Interim SPD Manager

Lehigh Valley Hospital - Pocono
East Stroudsburg, PA
Interim OR Manager

SOUTH CAROLINA

Self Regional Healthcare
Greenwood, SC
Interim Director of Surgical Services

TENNESSEE

Methodist Le Bonheur University
Hospital
Memphis, TN
Interim Clinical Director - Operating Room

TEXAS

Christus Good Shepherd Medical
Center
Longview, TX
Interim OR Clinical Director

UT Southwestern Medical Center
Dallas, TX
Interim AVP Surgical Services & Digestive Diseases

Baylor Scott & White Medical Center
Frisco, TX
Interim Director of Surgical Services

VERMONT

University of Vermont Medical Center
Burlington, VT
Interim SPD Educator
Interim Director of Surgical Services

WASHINGTON

St. Anne Hospital
Burien, WA
Interim Director of Surgical Services



WHITMAN PARTNERS

QUESTIONS TO ASK YOUR INTERIM CANDIDATE

1

Can you describe a recent experience where you successfully managed a perioperative team during a transition period?

2

How do you approach integrating into a new team and quickly assessing the department's needs?

3

What strategies do you use to ensure continuity of care and maintain high standards of patient safety during your interim tenure?

4

Can you provide examples of how you have handled conflicts or challenges within the surgical services team?

5

How do you stay updated with the latest advancements and best practices in surgical services management?

6

What are your key priorities during the first 30 days of an interim assignment?

Whitman Partners supports Directors of Surgical Services by providing qualified interim talent with the goal of building an effective, efficient, and reliable perioperative team.



WHITMAN PARTNERS

MEET OUR TEAM



JOSIAH WHITMAN

CEO

503.866.9497

josiah.whitman@whitmanpartners.com



ZACH PARKER

Manager of Interim Department

415.377.8501

zach.parker@whitmanpartners.com



INES RADIC

Talent Agent

503.867.9163

ines.radic@whitmanpartners.com



ARIE MORROW

Senior Talent Agent

503.875.1346

arie.morrow@whitmanpartners.com



HEATHER KOLTKO

HR + Credentialing Specialist

310.683.3779

heather.koltko@whitmanpartners.com



TORI LUCAS

Concierge

561.951.4310

tori.lucas@whitmanpartners.com

Visit our website to learn more!
whitmanpartners.com/about

